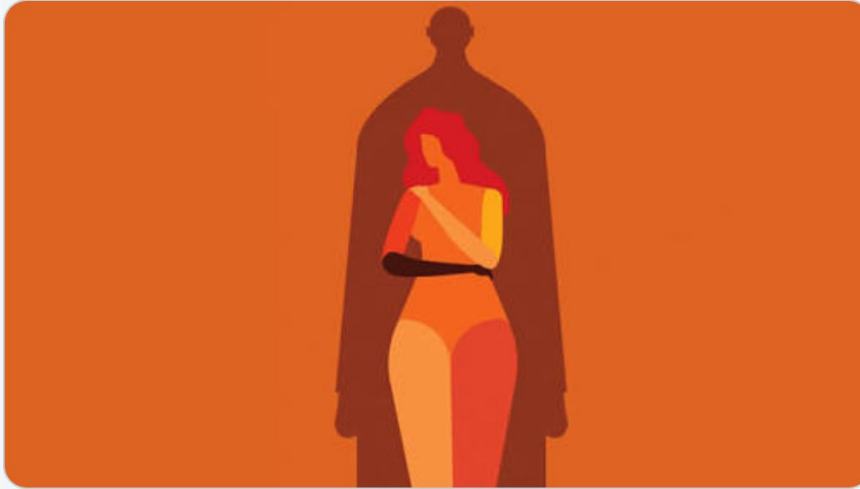




Indian Women Blog @indianwomenblog · 13h

We open the chat with @kNOwVAWdata to discuss how pandemics such as #COVID19 trigger an increase in #genderviolence and how the data on violence can guide a more coordinated response from the governments and social groups. Join us in next 10 minutes.



1

3

6



Indian Women Blog @indianwomenblog · 13h

Replying to @indianwomenblog

We welcome @Henriya and @kNOwVAWdata into our live chat to understand how #GenderData collected during the pandemic can help shape better policies & programmes to #EndVAW in post-Covid world.

1

2

1



kNOwVAWdata @kNOwVAWdata · 13h

Replying to @indianwomenblog and @Henriya

Thank you for including us in this important discussion. We are delighted to have the opportunity to join you. @kNOwVAWdata works to build the capacity of countries across @AsiaPacific to measure the prevalence of #ViolenceAgainstWomen.

1

3

2



Indian Women Blog @indianwomenblog · 13h

Opening the chat, could you please talk about how pandemics such as #COVID19 trigger an increase in violence and sexual exploitation against women and girls worldwide? #GBV

1

1





kNOwVAWdata @kNOwVAWdata · 13h

Some emerging data (mainly from [#GenderBasedViolence](#) service providers & media reports) indicate intimate partner violence is increasing during [#COVID19](#), as is health-sector workplace violence & greater risk of exploitation/abuse for vulnerable women workers generally. 1/n

1 4 2



kNOwVAWdata @kNOwVAWdata · 13h

While some of these reports indicate that calls to violence hotlines, police & shelters have increased during the pandemic, other sources show that calls, reports & use of services decreased. Data from service providers have always been hard to interpret even before [#COVID19](#). 2/n

1 3 4



kNOwVAWdata @kNOwVAWdata · 13h

[#ViolenceAgainstWomen](#) surveys (pre [#COVID19](#)) show in many countries less than 10% of women living w/ violence seek help. A change in help-seeking doesn't usually reflect a change in violence prevalence. Thus data from service providers can't be used as a proxy for prevalence. 3/n

1 5 4



kNOwVAWdata @kNOwVAWdata · 13h

But we do expect violence to increase & be more severe now, as w/ other emergencies, esp. since [#COVID19](#) confinement measures cause tensions at home & affect ability to generate income, access services & social networks, etc. Many women cannot leave home to escape violence. n/n

1 4 6



Indian Women Blog @indianwomenblog · 13h

You tweeted recently that in countries with existing [#VAWdata](#), patterns from past surveys can help direct response resources during [#COVID19](#). Could you please elaborate on how the data can be used efficiently during the lockdown and prevent the violence before it takes place?

1 2 1



kNOwVAWdata @kNOwVAWdata · 13h

The only source of reliable data on [#ViolenceAgainstWomen](#) prevalence is surveys that interview a statistically representative sample of women. These tell us how many women experience violence, where, how often, risk factors/triggers and if & where women seek help, or why not. 1/n

1 4 3



kNOwVAWdata @kNOwVAWdata · 13h

Under lockdown, survey interviewers can't go to households. Many phone interviews can't be done in private, putting women at further risk, and making them less likely to disclose violence honestly. Survey data collected during [#COVID19](#) may hugely underestimate the problem. 2/n

1 4 3



kNOwVAWdata @kNOwVAWdata · 13h

Instead, data from past surveys can be used during #COVID19 to inform where & which women are typically most at risk, where they get help from & barriers to getting help. These data tend to be underused but are rich sources of robust & precise info that can help women now. 3/n

2 3 2



kNOwVAWdata @kNOwVAWdata · 13h

We can also map & safely interview service providers operating during #COVID19 for qualitative data to inform where & how support resources are needed most. E.g. Lockdown impact to services; available helplines/shelters/protection orders; or change in service usage patterns. n/n

1 2 2



Indian Women Blog @indianwomenblog · 13h

Exploring it further, how could have the data on violence been used to plan a more gender-sensitive #lockdown? #genderviolence

1 2 1



kNOwVAWdata @kNOwVAWdata · 13h

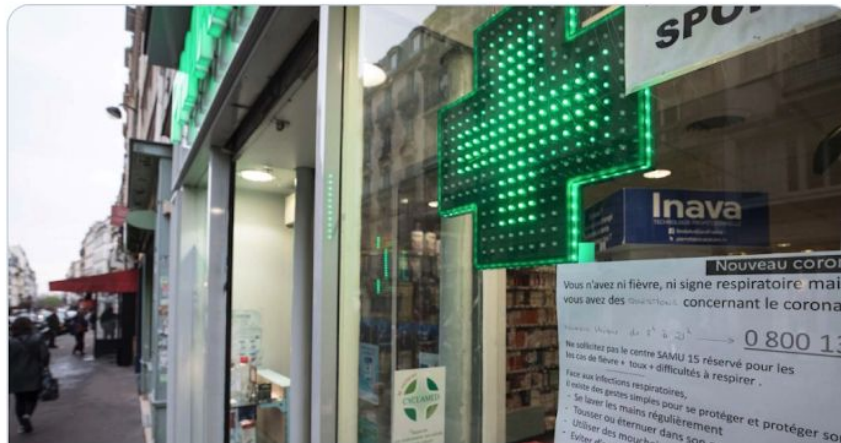
This needs more attention in many places! Since we know a large proportion of women is affected by violence, here are some ideas for a more gender-sensitive #COVID19 response. Governments could exempt survivors of #DomesticViolence from restrictive measures to stay home. 1/n

1 3 2



kNOwVAWdata @kNOwVAWdata · 13h

Other ideas: If shelters for women experiencing violence are full or closed, make alternative options available. And establish safer ways for violence survivors & witnesses to report incidents (e.g. pharmacies as safe places, as in France & Spain: cnn.it/359wU8x) n/n



Women are using code words at pharmacies to escape domestic viol...

On Sunday, a woman walked into a pharmacy in the French city of Nancy, one of the few public places still open after the government ...

edition.cnn.com

1 4 2



Indian Women Blog @indianwomenblog · 13h

How can the data on violence guide a more coordinated response from the governments and organizations working towards #EndVAW? Where does this coordinated action fail now during the #pandemic?

1 1



kNOwVAWdata @kNOwVAWdata · 12h

During #COVID19 we are working with governments & other organizations to inform them about the risks & value of data collection, what they should and should not do. There is a lot of pressure to collect #COVID19 #GenderData. @UNFPAAsia @UNFPAIndia 1/n

1 2 1



kNOwVAWdata @kNOwVAWdata · 12h

Many new players in this field do not understand #GenderBasedViolence dynamics and challenges around the data collection of violence. This results in risks for women and data that misrepresent the size of the problem, thus undermining its importance. @unfpaasia @unfpaindia 2/n

2 2 2



Surbhi @surbhi_ihbrus · 12h

Thank you for the enriching discussion. I have a question for @kNOwVAWdata and @Henriya - how do we collect data on VAW ethically even during a state of pandemic and global emergency? @Prof_Sivakami

2



Henriette Jansen @Henriya · 12h

We believe no data should be collected if it puts women's safety at risk. That is especially true with #COVID19. And we think reliable data on what happened during the pandemic (stats/prevalence rates) can be measured when we can resume prevalence surveys safely & in private.1/n

1 4 4



Henriette Jansen @Henriya · 12h

But we can map & safely interview service providers operating during #COVID19 for qualitative data to inform where & how support resources are needed most. E.g. Lockdown impact to services; available helplines/shelters/protection orders; or change in service usage patterns. n/n

4 3



kNOwVAWdata @kNOwVAWdata · 13h

Ultimately, public health policy & #COVID19 response must uphold #GenderEquality & #HumanRights, including how we collect & report #ViolenceAgainstWomen data. In doing so, we will have better outcomes in tackling this pandemic and others in the future. @unfpaasia @unfpaindia n/n

1 2 1



Indian Women Blog
@indianwomenblog



Replying to @kNOwVAWdata @Henriya and 3 others

How would you access India's response to #EndVAW during the pandemic?

8:07 PM · Apr 27, 2020 · [Twitter Web App](#)

1 Retweet



kNOwVAWdata @kNOwVAWdata · 12h



Replying to @indianwomenblog @Henriya and 3 others

While @kNOwVAWdata works on #ViolenceAgainstWomen data throughout the #AsiaPacific region, we are not currently directly involved in data collection activities ongoing in #India. But our colleagues at @unfpaasia are heavily involved in #COVID19 response. @unfpaasia 1/n



1



2



1



kNOwVAWdata @kNOwVAWdata · 12h



That said, the Government of #India has issued clear advisories to all states to ensure continuity of 1-stop service centres, 181-women help lines & the institutional machinery for implementing laws relevant to addressing #ViolenceAgainstWomen & girls. @unfpaasia @unfpaasia 2/n



1



2



2



kNOwVAWdata @kNOwVAWdata · 12h



#India's Ministry of Women & Child Development has been reaching out to its functionaries through online trainings on different aspects of preventing & addressing #ViolenceAgainstWomen & girls, including psychosocial counseling, legal support & violence referrals. @unfpaasia 3/n



1



3



3



kNOwVAWdata @kNOwVAWdata · 12h



And civil society groups in #India are also actively compiling and disseminating information about helplines and organizing training sessions on tele-counseling services for responding to #ViolenceAgainstWomen and girls. @UNFPAAsia @UNFPAIndia 4/n



1



3



2





kNOwVAWdata @kNOwVAWdata · 12h

As the [#COVID19](#) situation on the ground continues to change, response efforts in [#India](#) will need to be attuned to the changing dynamics & all actors will need to collaborate/coordinate to ensure an effective response to [#ViolenceAgainstWomen](#) and girls. [@UNFPAAsia](#) [@UNFPAIndia](#) n/n

1 3 2



Indian Women Blog @indianwomenblog · 12h

What does [#genderdata](#) say about impact of the [#pandemics](#) on marginalised communities worldwide and particularly in India?

1 1



kNOwVAWdata @kNOwVAWdata · 12h

The impacts of [#COVID19](#) will likely magnify deep-rooted forms of discrimination and inequalities, including [#GenderInequality](#), & increase vulnerability of groups that have traditionally faced discrimination, such as people with disabilities, migrants & refugees. [@unfpaasia](#) 1/n

1 2 2



kNOwVAWdata @kNOwVAWdata · 12h

[#GenderDiscrimination](#) may reduce funding to women's groups & [#GenderBasedViolence](#) service providers. In the 2008 global financial crisis, stimulus/austerity measures impacted [#DomesticViolence](#) shelters & resulted in funding cuts to women's orgs in many countries. 2/n [@UNFPAasia](#)

1 2 1



kNOwVAWdata @kNOwVAWdata · 12h

With [#COVID19](#) we are also seeing gender impacts in terms of loss of income & livelihoods and increased gender gaps in the economy, with women concentrated in informal work & affected sectors, and lacking workplace protections. [@unfpaasia](#) [@unfpaIndia](#) 3/n

1 2 2



kNOwVAWdata @kNOwVAWdata · 12h

There's increased risk of harmful practices due to economic shock & hardship of the crisis, which could exacerbate the low value of girls. And [#COVID19](#) response & policies may further exclude women & other marginalized groups from decision-making during crisis & recovery. 4/n

1 2 2



kNOwVAWdata @kNOwVAWdata · 12h

The crisis is likely to have longer term negative consequences on women's health and wellbeing, safety and security & economic participation & empowerment. This is why it is so important to have a gender analysis both on the impact of the pandemic & on response measures. n/n

2 2



kNOwVAWdata @kNOwVAWdata · 12h



.@UNFPA is working with sister agencies, such as @UNWomen and @OHCHRAsia, to better understand these gendered impacts of #COVID19.

@UNFPAasia @UNFPAIndia @Henriya



Indian Women Blog

@indianwomenblog



Replying to @surbhi_ihbrus @kNOwVAWdata and 5 others

Adding to the wonderful question by @surbhi_ihbrus, please talk about challenges arising while collecting information on women's experiences of violence.

8:27 PM · Apr 27, 2020 · Twitter Web App

1 Retweet



kNOwVAWdata @kNOwVAWdata · 12h



Replying to @indianwomenblog @surbhi_ihbrus and 5 others
@surbhi_ihbrus thank you!

We can't conduct #VAW prevalence surveys during #COVID19 which requires interviewing women at their homes in private. This is nearly impossible during lockdown measures. If we did interview women, others may hear which puts women at further risk. 1/n



kNOwVAWdata @kNOwVAWdata · 12h



We can also expect that because of this situation, women may not share their true experiences of violence. That means the survey data collected during #COVID19 may hugely underestimate the problem and give a false impression of women's reality, undermining its importance. 2/n





kNOwVAWdata @kNOwVAWdata · 12h

We must ask about the trends we see in administrative data reports and the media: are these a sign of increased violence? Maybe. Or is there a shift in women seeking help? Or is it both? 3/n

@UNFPAasia @UNFPAIndia @DVSW_Unimelb @ANROWS

2 3 2



kNOwVAWdata @kNOwVAWdata · 12h

In some contexts, access & use of shelters & other services for survivors has gone down, & thus reported numbers have gone down. This is due to the lockdown & is not a sign of decreased violence. Hence we need to talk to the service providers to understand what is happening. n/n

1 2 2



Surbhi @surbhi_ihbrus · 12h

Thank you @kNOwVAWdata and @Henriya! Certainly important to remember that no situation justifies unethical collection of data.

1 4



Indian Women Blog
@indianwomenblog

Replying to @kNOwVAWdata @surbhi_ihbrus and 7 others

Closing this insightful chat, UN Secretary-General @antonioguterres

has called on governments to "put women and girls at the centre of efforts to recover from #COVID19." What should be at the center of these efforts, in your opinion?

8:36 PM · Apr 27, 2020 · Twitter Web App

1 Retweet 1 Like

Retweet Like



kNOwVAWdata @kNOwVAWdata · 12h

Replying to @indianwomenblog @surbhi_ihbrus and 8 others

Adaptive, flexible and innovative approaches are needed to provide continued access to #GenderBasedViolence services for survivors during #COVID19 and always. In line with Secretary General @antonioguterres's words, we see the following priorities: 1/n @UNFPAasia @UNFPAIndia

1 2 3



kNOwVAWdata @kNOwVAWdata · 12h



1) Ensure [#GBV](#) services are considered as essential services in [#COVID19](#) emergency response plans 2) Adapt essential, lifesaving GBV services to remote delivery modalities 3) Provide updated and accurate referral information on available & accessible GBV response services ...
2/n



1



2



2



kNOwVAWdata @kNOwVAWdata · 12h



And 4) Strengthen capacity of front line staff on psychological first aid and referral to [#GenderBasedViolence](#) services. n/n

[@UNFPAasia](#) [@UNFPAIndia](#)



1



2



2



Indian Women Blog @indianwomenblog · 12h



Thank you so much for this knowledgeable and powerful chat that has set the priorities straight - to support the vulnerable communities during these testing times. We wish you all the best for your meaningful work. Together we can [#EndVAW](#)



1



1



3



kNOwVAWdata @kNOwVAWdata · 12h



Thank you so much for the chance to talk about how [#COVID19](#) changes the way we collect, analyse and use [#ViolenceAgainstWomen](#) data. We are honoured to have been part of this conversation.

[@UNFPAasia](#) [@UNFPAIndia](#) [@Henriya](#)



2



2





Sivakami Muthusamy
@Prof_Sivakami



Replying to [@kNOwVAWdata](#) [@indianwomenblog](#) and 2 others

I have a question to [@kNOwVAWdata](#) [@Henriya](#), how do we trace women from the earlier survey data as the identifiers are not traceable for safety and ethical reasons?

8:05 PM · Apr 27, 2020 · [Twitter for Android](#)

2 Likes



Henriette Jansen @Henriya · 13h



Replying to [@Prof_Sivakami](#) [@kNOwVAWdata](#) and 2 others

Hi [@Prof_Sivakami](#). We cannot trace women from survey data. It is meant to aggregate data for the popn. The respondents are promised confidentiality. It is only at the end of the survey interview that women are given information on support services, or referred if they want so.



1



2



2



Sivakami Muthusamy @Prof_Sivakami · 13h



Absolutely, I understand that. That's why I was wondering how we can use earlier survey data during COVID-19, or any pandemic situation.



1



3



Indian Women Blog @indianwomenblog · 13h



Thank you for the great question





Indian Women Blog
@indianwomenblog



Replying to [@kNOwVAWdata](#) [@surbhi_ihbrus](#) and 8 others

Thank you so much for this knowledgeable and powerful chat that has set the priorities straight - to support the vulnerable communities during these testing times. We wish you all the best for your meaningful work. Together we can [#EndVAW](#)

8:47 PM · Apr 27, 2020 · [Twitter Web App](#)

1 Retweet 3 Likes



kNOwVAWdata @kNOwVAWdata · 12h



Replying to [@indianwomenblog](#) [@surbhi_ihbrus](#) and 8 others

Thank you so much for the chance to talk about how [#COVID19](#) changes the way we collect, analyse and use [#ViolenceAgainstWomen](#) data. We are honoured to have been part of this conversation.

[@UNFPAasia](#) [@UNFPAIndia](#) [@Henriya](#)



You Retweeted



Henriette Jansen @Henriya · 12h

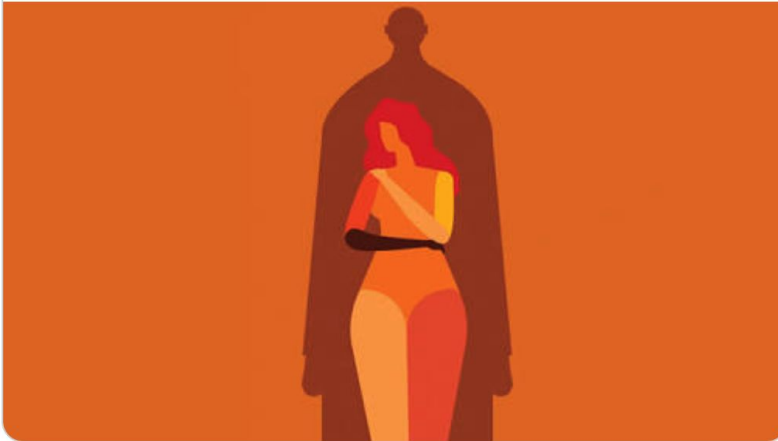
Just finished an hour-long twitter chat with [@indianwomenblog](#) on what [@kNOwVAWdata](#) and [@UNFPAasia](#) advise on collection and use of [#VAWdata](#) and [#genderdata](#) to understand the impact of [#COVID19](#) and to guide responses. For the entire interview please see the thread below.



Indian Women Blog @indianwomenblog · 14h

We open the chat with [@kNOwVAWdata](#) to discuss how pandemics such as [#COVID19](#) trigger an increase in [#genderviolence](#) and how the data on violence can guide a more coordinated response from the governments and social groups. Join us in next 10 minutes.

[Show this thread](#)



6

9



You Retweeted



Dr Ingrid Wilson @ingridmwilson · 12h

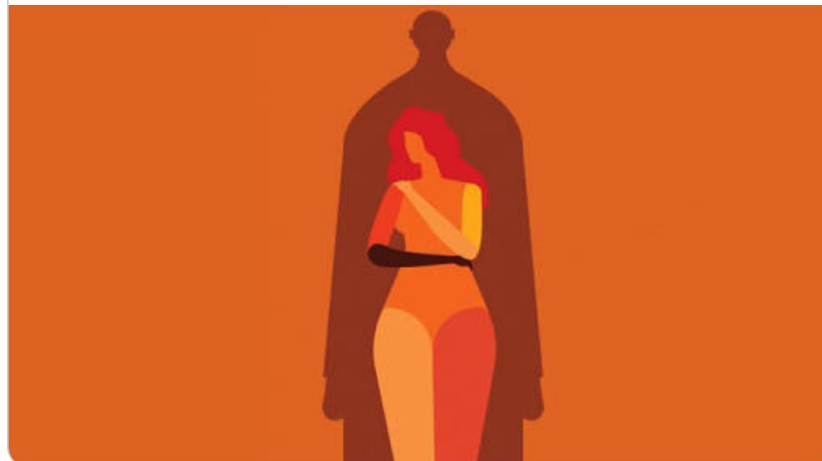
Good tweet chat on ethics of VAW data collection during pandemics with [@kNOwVAWdata](#)



Indian Women Blog @indianwomenblog · 14h

We open the chat with [@kNOwVAWdata](#) to discuss how pandemics such as [#COVID19](#) trigger an increase in [#genderviolence](#) and how the data on violence can guide a more coordinated response from the governments and social groups. Join us in next 10 minutes.

[Show this thread](#)



3

2

